

Natural Resources Wales brings together the work of the Countryside Council for Wales, Environment Agency Wales and Forestry Commission Wales. Our purpose is to ensure that the natural resources of Wales are sustainably enhanced, maintained and used, now and in the future.

Welcome to our thirteenth newsletter!

Many homes and businesses in Roath and Penylan are at risk of flooding from the Roath Brook and River Rhymney. Natural Resources Wales is working with partners and the community to deliver a flood scheme to reduce flood risk to over 400 properties. This newsletter will keep you informed of the scheme's progress and upcoming consultation.

We are aware of the upset that our tree felling works in the park gardens has caused. We have worked throughout the development and design of the scheme to minimise tree felling and have had to make compromises on which trees to lose and which to retain. We too do not want to remove trees and have only done so where it is absolutely necessary and cannot be avoided.

Unfortunately the trees felled have been necessary to construct the flood defences. We assessed each tree individually and the tree locations heavily influenced the alignment of the flood defences, which was carefully considered and developed over a number of years in conjunction with Cadw and Cardiff Council's conservation officers. We have tried to achieve a balance of the impacts on the heritage features and character of the park gardens and the wider conservation area, whilst providing a scheme that manages flood risk. The scheme has planning approval from Cardiff Council and we intend to construct this approved design and alignment, as changing the design to avoid felling a specific tree will result in the loss of an alternative tree or trees.

We shall be replanting 105 trees within the gardens (the majority of which will be between 2.5m and 5m high) and up to 200 saplings within Roath recreation ground. We shall provide clear tree planting plans and further sample photographs of the various species for viewing in our Waterloo Gardens cabin by the end of March.

We shall be undertaking further tree felling in Roath Brook Gardens and Roath Mill Gardens in September. The Arboricultural Impact Assessment available on our website shows which trees these will be and we will mark them during the summer.

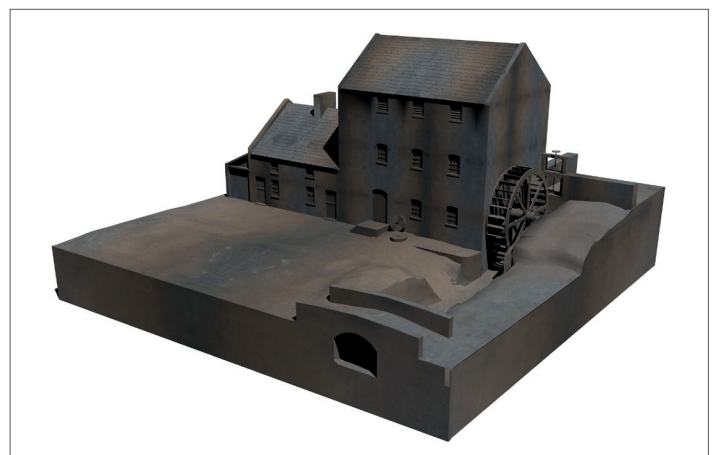
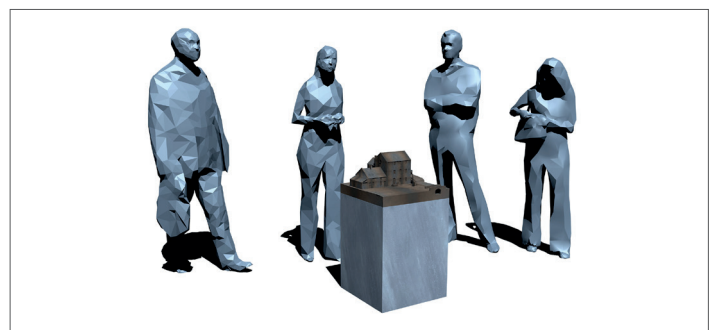
What's been happening?

We held a drop-in session on 11th January for the public to meet our contractor, Dawnus, and to ask about the works. Thank you to the approximately 100 people who attended and gave us helpful feedback.

Dawnus has now started on site, setting up a compound in Railway Gardens and erecting temporary site boundary fencing, which will be changed to timber hoarding boards in March.

We have a cabin in Waterloo Gardens for the public to come and find out more information and speak with our Community Officer, Matthew Frewer. We have nearly completed tree and vegetation removal in Waterloo Gardens, Railway Gardens and the downstream end of Roath Mill Gardens.

Our artist, Rubin Eynon, has been working on a piece of art to be integrated into Roath Mill Gardens. Informed by community consultation via our last drop-in session and Rubin's dedicated Facebook page, the chosen design is a bronze model of the old Roath Mill, as shown in the images below. This will be approximately 50cm by 50cm by 100cm high, and will be located on a widening of the footpath upstream of Waterloo Road bridge, near where Roath Mill was previously located. Rubin will now be approaching local schools to involve them with development of the model. For further information please see our scheme webpage.



Roath Flood Scheme News continued...



What's Next?

We will soon commence the main construction works, with utilities diversions and flood wall works in Railway Gardens and Waterloo Gardens. Unfortunately we shall be closing the footbridge from Newminster Road to Waterloo Gardens road from mid-March for approximately 5 months to allow its replacement, and the construction of the adjacent flood walls. We shall re-open this as soon as we possibly can.

We are agreeing with Cardiff Council Highways traffic management measures and when to close Waterloo Road bridge to construct the new bridge. We will keep people informed of any planned road and garden closures or diversions as early as possible via our cabin in Waterloo Gardens, our webpage and social media (see below).

We have received feedback from the community regarding the pergola structure located on the raised dais area in Waterloo Gardens and are currently reviewing design options for this area. We welcome further comments from the public on this proposal and are planning a drop-in event to be held on **Thursday 6th April** from **3pm until 7pm** at **St Peter's Rugby Club**. Please drop-in to discuss any queries regarding the scheme.

Clarification

Some of our consultation material has previously incorrectly stated that over 400 properties are at risk of flooding at a 1:5 (20%) chance event. This is incorrect. 405 properties are at risk of flooding at a 1:75 (1.33%) chance event, and will hence benefit from the flood defences. We apologise for any confusion.

Communication

For construction related queries please contact Dawnus's Community Officer, Matthew Frewer – **07880 358541**, **Roath@dawnus.co.uk**

For further information please visit our scheme webpage: **naturalresources.wales/roath**

Or via – Twitter: **@natreswales** or Facebook: **NatResWales**

Please sign up to our mailing list to receive our newsletters by email, as we prefer to issue them electronically. If you do not have access to email, but live in Roath, please call Matthew Frewer with your details and we shall arrange to deliver future newsletters to you.

Contact us or sign up for news:

Roath@NaturalResourcesWales.gov.uk